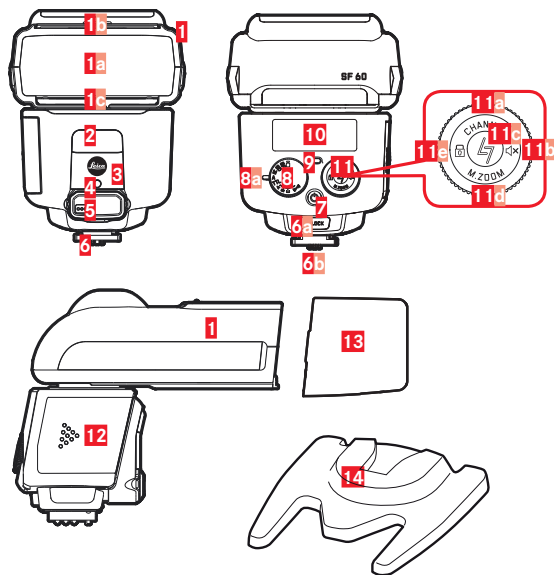




# LEICA SF 60

## QUICK START GUIDE



### Names/Functions of the Main Components

- 1** Flash head, with
  - a** Diffuser screen
  - b** Reflector panel
  - c** Wideangle diffusor panel
- 2** Video light
- 3** Sensor for remote control
- 4** AF assist light
- 5** Socket for connection with external battery pack (behind cover)
- 6** Foot with
  - a** Unlock button
  - b** Lock pin
- 7** Main switch, press briefly to switch unit on or off
- 8** Mode dial, with
  - a** Index
- 9** Status LED/test flash button, green: flash ready, red flashing: flash recharging, yellow flashing: pairing process in progress (see next section)
- 10** Monitor

- 11** Setting ring/rocker with function indications for
  - a** Channel selection, press 1 s during remote control mode to access function, use setting ring to switch channels
  - b** Acoustic signal, press 1 s to turn off/on
  - c** Pairing, see last section
  - d** Zoom mode/ focal length, press 1 s to access function, use setting ring to switch modes/select focal length
  - e** Setting ring lock, press 1 s to turn on/off
- 12** Battery compartment door
- 13** Soft box
- 14** Flash stand with 1/4" thread

### Modes (see mode dial **8**)

	Video light, 9 brightness levels selectable with setting ring <b>11</b>
SF	Remote release without pre-flash
SD	Remote release with pre-flash
M	Manual setting, output level selectable with setting ring <b>11</b> , (1/4 to 1/256 in 0,3 EV increments)
A	Full automatic mode, flash exposure controlled by camera
TTL	Full automatic mode, flash exposure compensation selectable with setting ring <b>11</b> (± 2 EV in 0,3 EV increments)
ABC (iii-iii)	Wireless remote control, three flash groups with differing settings selectable

### Pairing Process with the Remote Control Unit Leica SF C1

During the pairing process, both the Leica SF 60 and the Leica SF C1 must not be mounted on the camera.

1. Switch the Leica SF 60 and the Leica SF C1 off
2. On the Leica SF 60, simultaneously press main switch **7** and setting ring/rocker **11** centrally at  $\frac{1}{4}$  ( $\geq 3$  s) until its status LED **9** flashes yellow and a regular beep sounds
3. After that, while the flash's status LED keeps flashing, simultaneously press the Leica SF C1's main switch and setting ring/rocker centrally at  $\frac{1}{4}$  ( $\geq 3$  s) until its status LED also flashes yellow
4. A successful pairing is indicated by the end of the flashing and beeping.

### Notes:

- Before starting the pairing process, make sure both the Leica SF 60 and the Leica SF C1 are set to automatic channel selection.
- Do not carry out any other settings on any of the respective units during the pairing process.
- A successful pairing remains active even if any of the respective units is switched off and on again.

Further details on the pairing process and the remote control functions can be found in the respective units' comprehensive instructions which are available for download on the Leica Camera AG homepage.